

# 51 Nace Avenue

Piedmont, CA 94611

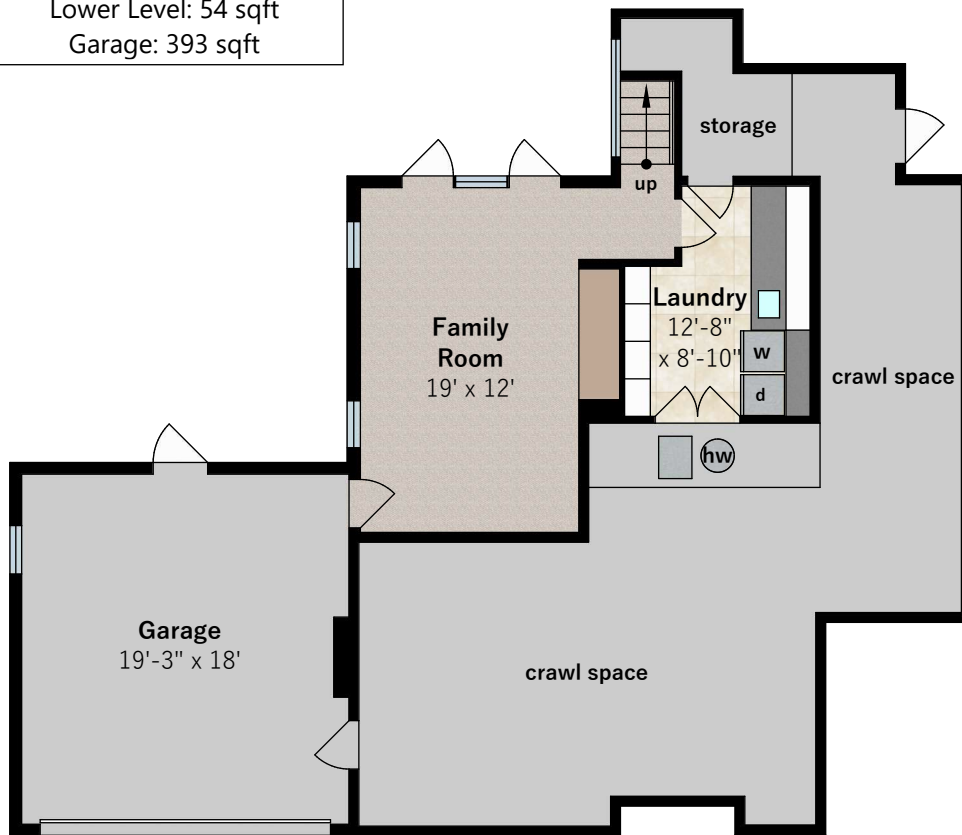


**Estimated Total Finished  
Square Footage: 3,368 sqft**

Lower Level: 464 sqft  
Main Level: 1,268 sqft  
Upper Level: 1,185 sqft  
Attic Level: 451 sqft

**Estimated Total Unfinished  
Square Footage: 447 sqft**

Lower Level: 54 sqft  
Garage: 393 sqft



**Lower Level**  
approx. 464 sqft



**Main Level**  
approx. 1,268 sqft

Interior room dimensions are shown, and all square footage measured from perimeter of exterior walls. Decks, porches, and patios are not included in calculations.  
Measured on March 10th, 2024

Any and all information on this drawing is for illustrative purposes only and is deemed reliable, but not guaranteed. All information requires independent verification.



HEAFEY  
BAUM  
GROUP

[www.heafeybaum.com](http://www.heafeybaum.com)

**Estimated Total Finished  
Square Footage: 3,368 sqft**

Lower Level: 464 sqft  
Main Level: 1,268 sqft  
Upper Level: 1,185 sqft  
Attic Level: 451 sqft

**Estimated Total Unfinished  
Square Footage: 447 sqft**

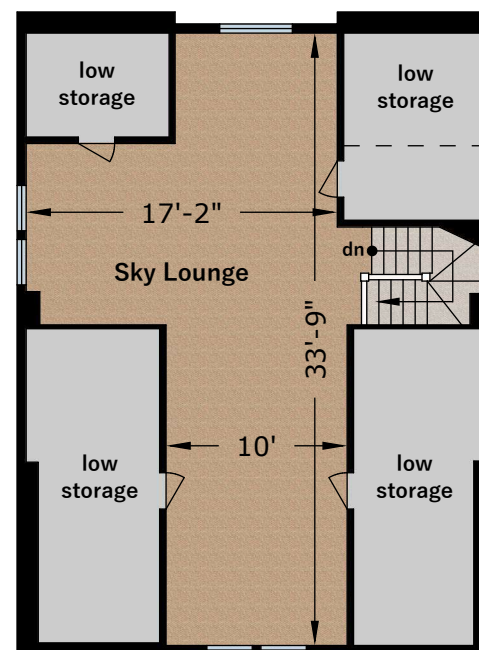
Lower Level: 54 sqft  
Garage: 393 sqft

# 51 Nace Avenue

Piedmont, CA 94611



**Upper Level**  
approx. 1,185 sqft



**Attic Level**  
approx. 451 sqft

Interior room dimensions are shown, and all square footage measured from perimeter of exterior walls. Decks, porches, and patios are not included in calculations.  
Measured on March 10th, 2024

Any and all information on this drawing is for illustrative purposes only and is deemed reliable, but not guaranteed. All information requires independent verification.



[www.heafeybaum.com](http://www.heafeybaum.com)